



Test Report No. F690101/LF-CTSAYAU12-04935A

Issued Date: 2012. 09. 05 Page 1 of 3

To: **SM HI-TECH**
16 Goyeongongdan1-gil,
Unchon-myun,
Ulju-gun,
Ulsan
Korea

The following merchandise was submitted and identified by the client as :

SGS File No. : AYAU12-04935A
Product Name : SMD Fuse
Item No./Part No. : SMD Fuse
Received Date : 2012. 09. 03
Test Period : 2012. 09. 04 to 2012. 09. 05
Test Results : For further details, please refer to following page(s)
Test Performed : SGS Korea tested the sample(s) selected by applicant with following results.
Test Comments : By the applicant's specific request, the sampling and testing was performed only for the part indicated in the photo without disassembly.

SGS Korea Co. Ltd. / Gimhae Laboratory

Sharpless Park
Jonadan Lee
Taehee Kang
Jongsir Lim/Testing Person

Thomas Hwang / Gimhae Lab. Mgr



Test Report No. F690101/LF-CTSAYAU12-04935A

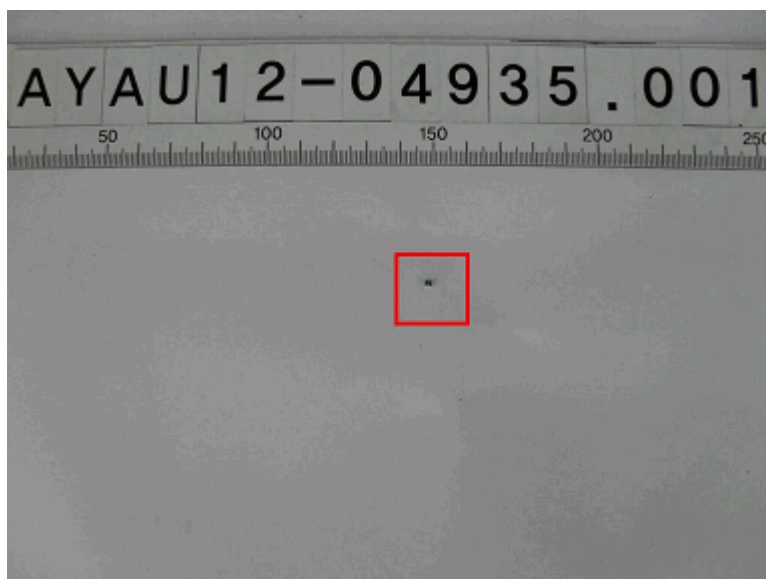
Issued Date: 2012. 09. 05 Page 2 of 3

Sample No. : AYAU12-04935A.001
Sample Description : SMD Fuse
Item No./Part No. : SMD Fuse
Materials : FR4 PCB, Copper wire, Thermosetting resin

Halogen Contents

Test Items	Unit	Test Method	MDL	Results
Bromine(Br)	mg/kg	EN 14582:2007 , IC	30	N.D.
Chlorine(Cl)	mg/kg	EN 14582:2007 , IC	30	180

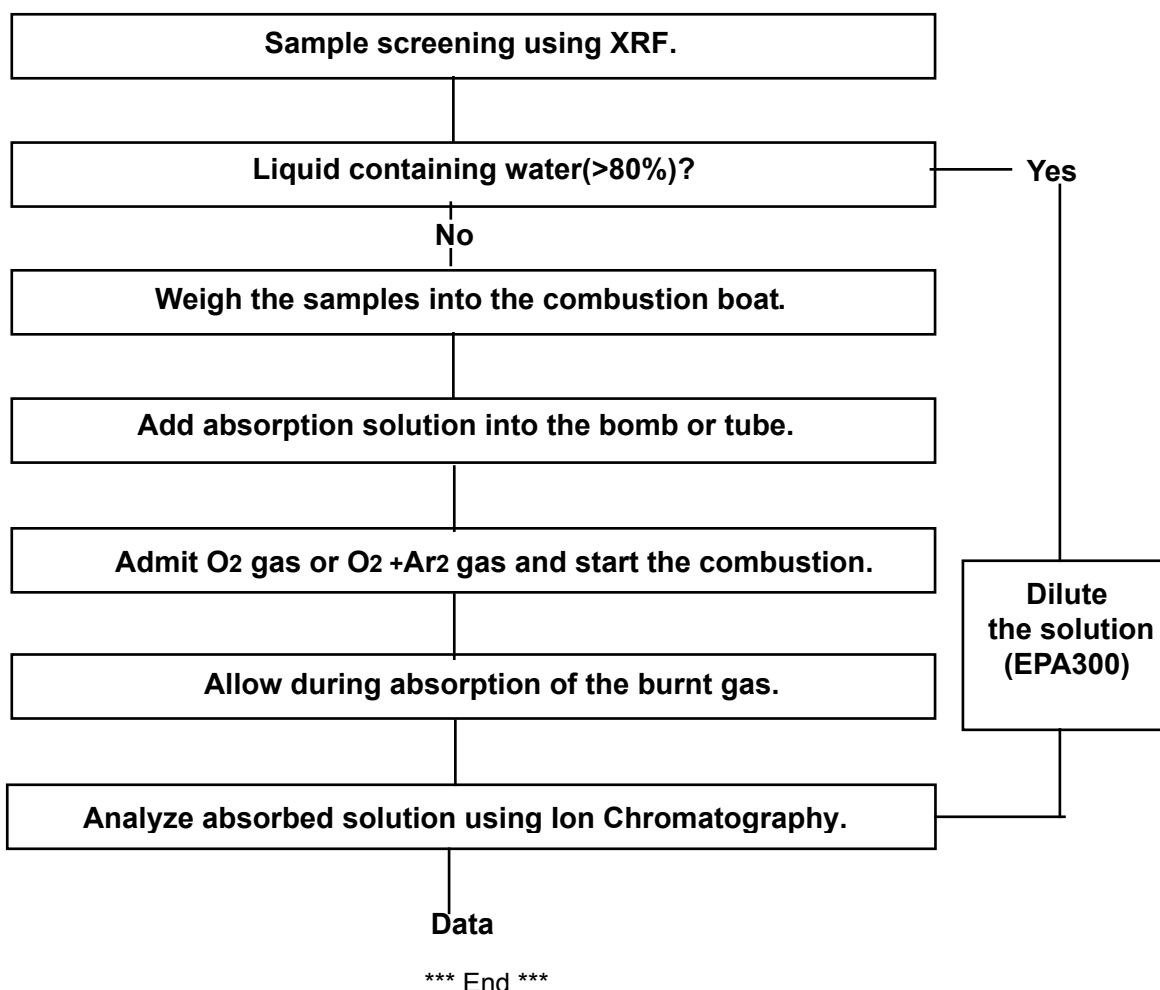
Picture of Sample as Received:



NOTE:(1) N.D. = Not detected.(<MDL)
(2) mg/kg = ppm
(3) MDL = Method Detection Limit
(4) - = No regulation
(5) ** = Qualitative analysis (No Unit)
(6) Negative = Undetectable / Positive = Detectable



Flow Chart for Halogen Test



- NOTE:(1) N.D. = Not detected.(<MDL)
(2) mg/kg = ppm
(3) MDL = Method Detection Limit
(4) - = No regulation
(5) ** = Qualitative analysis (No Unit)
(6) Negative = Undetectable / Positive = Detectable